



by Schneider Electric

INSTALLATION /OPERATION

Endura 360 Viewer

C3994M (1/15)

Introduction

The Endura 360 Viewer application is used to dewarp and virtually PTZ through the live and recorded video of Pelco's Evolution 360° (EVO) Series cameras on an Endura System. This application can be used on workstations without the Endura WS5200 Advanced Workstation software installed.

NOTE: Endura does not currently support audio for EVO Series cameras.

Figure 1. Endura 360 Viewer



Minimum PC Requirements

Processor	Intel Core 2 Quad, 2.66 GHz or better
Internal Memory	2 GB of RAM or higher
Software	WS5000/WS5200 Version 2.5.7 or later
Video System	Graphics card with DirectX 9.x or later, 256 MB of dedicated RAM
Network	1000 Mbps network port

Environmental Requirements

- SM5200 version 1.4.0.0050 or later
- NSM5200 version 2.03.03.0056 or later
- UDI5000-CAM version 1.3.4.0001 or later
- Endura 360 Viewer version 3.7.5 or later
- Evolution series operating on firmware version 1.4.7 or later

Installing the Application

Install the Endura 360 Viewer application on a laptop or desktop PC (Windows 7 only). Double-click the setup.exe file and click 'yes' if a warning dialog appears (standard Windows 7 security check).

Navigation Buttons and Menus

Table A. Navigation Buttons



Camera List: The application auto-discovers EVO cameras on the network and presents them in a list. Click Refresh List to update the list with recently added cameras. Click Live View to view live video. Click Playback View to view recorded video.



Clip Player: Allows playback and control of an exported clip from Endura. This button is only available when there are no cameras being viewed.



Auto Tour Mode: Click Auto Tour to run all cameras being viewed through a preset PTZ tour.



Layout: Choose from four different screen layouts including Single View, Quad View, Full Screen, Tri View, or Full Screen/Windowed.

CAMERA MENU

CAMERA MOUNT

These settings allow the dewarping functionality to be used depending on camera mounting positions. Select the mounting position that matches each camera's installation. Select Auto to use the orientation stated in the camera's web interface.

DEWARP TYPE

Select the dewarping method for the camera image:

- **Fisheye (3D Dewarping):** Dewarp the fisheye image from the camera.
- **Fisheye (No Dewarping):** Display the image from the camera without dewarping it.
- **Panorama (2 x 180 Narrow View):** Dewarp the fisheye image from the camera as 2*180-degree panoramas.
- **Panorama (1 x 180 Narrow View):** Dewarp the fisheye image from the camera as 1*180-degree panorama.
- **Panorama (1 x 360 Wide View):** Dewarp the fisheye image from the camera as 1*360-degree panorama.

IMAGE SETTINGS

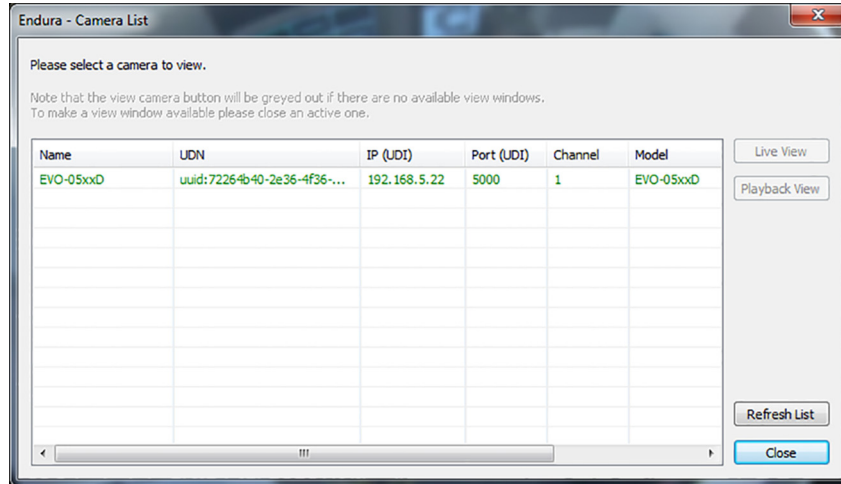
Set digital brightness, contrast, and saturation enhancements; select whether enhancements apply manually or automatically.

- **Brightness:** Controls the lighting detail of the scene.
- **Contrast:** Controls the gradation between the darkest and lightest portions of the scene.
- **Saturation:** Controls the intensity of colors in the scene.

Viewing Video

1. Open the Endura 360 Viewer.
2. Click the Camera button on the left to bring up the list of the EVO cameras on the Endura system.
3. Enter your Endura user name and password. The Camera List dialog appears.

Figure 2. Camera List Dialog



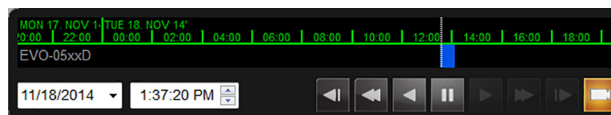
4. Select a camera in the list. Click either Live View or Playback View to view video in the application.
5. Click and drag within the field of view to pan and tilt the camera; double-click or use the scroll wheel on your mouse to zoom in/out. You can display up to four cameras at a time, depending on the workstation's hardware specifications and the number of other applications that are also open.
6. Change viewing settings as necessary using the navigation buttons and camera menu.

Viewing Recorded Video

Playback controls appear by default when you add a camera to the application. Select a date and time to retrieve video for a camera.

Note: You can also view recorded video by dragging Enhanced Search Results from the WS5000 into the Endura 360 Viewer.

Figure 3. Endura 360 Viewer Playback Icons

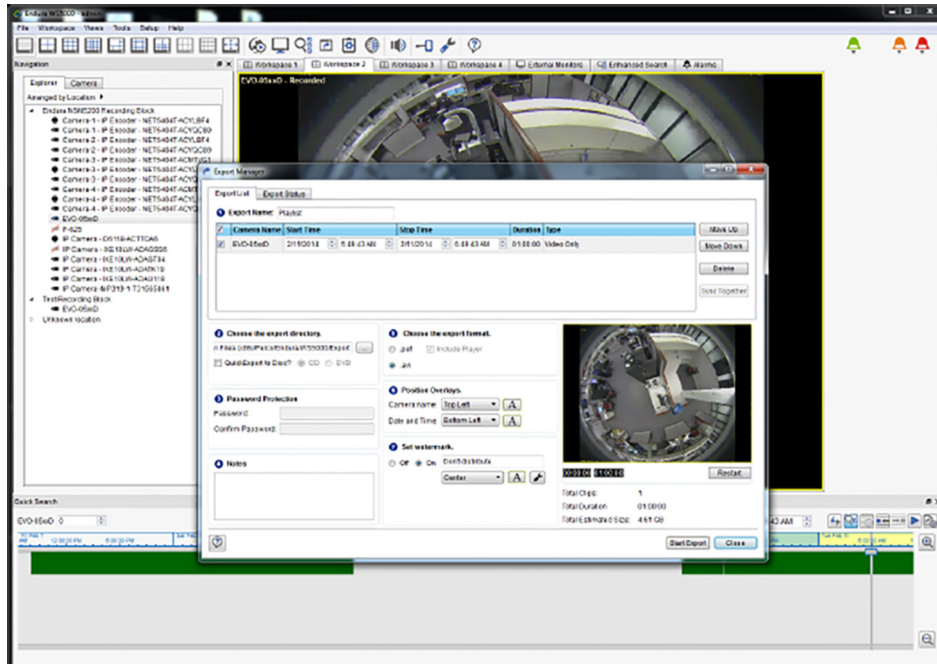


Viewing Exported Video

You can export video from Evolution 360° cameras in PEF or AVI formats. While you can play back PEF video from Evolution 360° series cameras in the Pelco Export Player, the video will appear in the default fisheye view, and you will not be able to PTZ. Use the Endura 360 Viewer application to dewarp or PTZ video exported from Evolution 360° cameras.

1. Export the video as either a .pef or .avi file. Refer to the Endura documentation on www.pelco.com for instructions on how to export video files.

Figure 4. Exporting Video From Endura



2. Click the Play Clip button, and then double-click the exported file to open it in the application.
3. Use the playback controls in the application to view exported video.

WARRANTY

For information about Pelco's product warranty and thereto related information, refer to www.pelco.com/warranty.

REVISION HISTORY

Manual #	Date	Comments
C3994M	1/15	Original version